



## Inflammation and Atherosclerosis

### The Value of the High-Sensitivity C-Reactive Protein Assay as a Risk Marker

Ishwarlal Jialal, MD, PhD, FRCPath, and Sridevi Devaraj, PhD

**Key Words:** Atherosclerosis; Inflammation; C-reactive protein; Risk marker

#### Abstract

*C-reactive protein (CRP) is a prototypic marker of inflammation. Numerous prospective studies in healthy volunteers have confirmed that high-sensitivity CRP (hsCRP) predicts cardiovascular events (CVEs), and hsCRP seems additive to an elevated total cholesterol level and a total/high-density lipoprotein cholesterol ratio in men and women in predicting risk. In smokers and people with metabolic syndrome, hsCRP levels are elevated; in elderly people, there seems to be a relationship between hsCRP and CVEs and mortality. Several properties of CRP make it proatherogenic; however, pending further studies, it should be considered as a risk marker. In people with acute coronary syndromes, hsCRP measurement may be valuable. Elevated levels in the highest quantile seem to predict greater mortality and poorer prognosis in patients with unstable angina and myocardial infarction (MI). While hsCRP is a strong independent predictor of risk of future MI, stroke, peripheral arterial disease, and vascular death, the validity of hsCRP as a risk marker needs to be assessed in all populations. Weight loss, statin drugs, aspirin, and high-dose alpha tocopherol therapy could affect hsCRP. It has its greatest validity as an adjunctive measure in the primary prevention of cardiovascular disease.*

#### Pathobiology of Atherosclerosis

The earliest event in atherogenesis is endothelial cell dysfunction.<sup>1</sup> Various noxious insults, including hypertension, diabetes, dyslipidemia, smoking, and hyperhomocysteinemia, can result in endothelial cell dysfunction, which manifests primarily as a deficiency of nitric oxide and/or prostacyclin, among other aberrations. Following endothelial cell dysfunction, mononuclear cells such as monocytes and T lymphocytes attach to the endothelium, initially loosely, and thereafter, they adhere firmly to the endothelium and then migrate to the subendothelial space. Thereafter, they mature into macrophages, incorporate lipid from modified lipoproteins, eg, oxidized low-density lipoprotein (LDL) via the scavenger receptor pathway, and become foam cells, the hallmark of the fatty streak lesion. The various adhesion molecules that are involved in monocyte endothelial adhesion are summarized in **Table 1**. Cell adhesion molecules are clearly present in atherosclerotic lesions, predominantly in the endothelium and intima (smooth muscle cells, monocytes, and macrophages), and are crucial to the early events of monocyte-endothelial cell adhesion.<sup>2</sup> Increased levels of soluble cell adhesion molecules (intercellular adhesion molecule [ICAM], vascular cell adhesion molecule [VCAM], E-selectin), which are shed from activated endothelium and/or phagocytes, are found in patients with coronary artery disease and carotid atherosclerosis.<sup>3-5</sup> Also, increased levels are present in people with diabetes and end-stage renal disease, both of which are identified with increased cardiovascular risk.<sup>6,7</sup> Results of studies suggest that some of these adhesion molecules, such as ICAM, can predict cardiovascular events,<sup>8</sup> while other adhesion molecules, such as VCAM-1 and E-selectin, are elevated with clinically evident atherosclerosis in cross-sectional studies.<sup>3-5</sup> Thus, soluble

**Table 1**  
Cell Adhesion Molecules and Atherosclerosis

Adhesion Molecules	Tissue Distribution of Adhesion Molecules	Counterreceptors	Cellular Distribution of Counterreceptors
L-Selectin	Leukocytes	Sialylated oligosaccharide	Endothelium
P-Selectin	Megakaryocytes, platelets, endothelium	Sialylated Lewis-x-like structures	Myeloid cells, lymphocytes
E-Selectin	Cytokine-activated endothelium	Sialylated Lewis-x-like structures	Granulocytes, lymphocytes
Immunoglobulin superfamily			
ICAM-1,2	Widespread	LFA-1 (CD11a/18); MAC-1 (CD11b/18)	All leukocytes
VCAM-1	Endothelium, macrophages, dendritic cells	VLA-4 (CD49D/29)	Lymphocytes, monocytes, basophils, eosinophils

ICAM, intercellular adhesion molecule; LFA, leukocyte function-associated antigen-1; MAC, macrophage-1 antigen; VCAM, vascular cell adhesion molecule; VLA, very late antigen.

**Table 2**  
Prospective Studies of High-Sensitivity C-Reactive Protein as a Marker of Cardiovascular Risk

Study/Reference (year)	End Point	Relative Risk (95% Confidence Interval)
MRFIT/Kuller et al <sup>28</sup> (1996)	CAD death	2.8 (1.4-5.4)
PHS/Ridker et al <sup>44</sup> (1997)	MI	2.9 (1.8-4.6)
	Stroke	1.9 (1.1-3.3)
CHS/RHPP/Tracy et al <sup>24</sup> (1997)	MI	2.7 (1.04-6.81)
PHS/Ridker et al <sup>15</sup> (1998)	PVD	4.1 (1.2-6.0)
WHS/Ridker et al <sup>14</sup> (2000)	CVD	4.4 (2.2-8.9)
MONICA/Koenig et al <sup>27</sup> (1999)	CAD	1.7 (1.3-2.2)
Helsinki/Roivainen et al <sup>30</sup> (2000)	CAD	3.6 (1.9-6.6)
Caerphilly/Mendall et al <sup>58</sup> (1996)	CAD	2.1 (1.2-3.6)
Britain/Danesh et al <sup>59</sup> (2000)	CAD	2.1 (1.4-3.3)
AFCAPS/TexCAPS/Ridker et al <sup>35</sup> (2001)	Coronary events	1.7 (P = .01)

AFCAPS/TexCAPS, Air Force/Texas Coronary Atherosclerosis Prevention Study; CAD, coronary artery disease; CHS/RHPP, cardiovascular health study and the rural health promotion project; MI, myocardial infarction; MONICA, Monitoring Trends and Determinants in Cardiovascular Disease (study); MRFIT, Multiple Risk Factor Intervention Trial; PHS, Physicians Health Study; WHS, Women's Health Study.

cell adhesion molecules might emerge in the future as novel markers for atherogenesis. However, much work is needed to standardize these assays before introduction into the clinical laboratory.

Following the early fatty streak lesion, smooth muscle cells migrate into the intima and form the fibrous cap. It is believed that the lipid-laden macrophage releases matrix metalloproteinases, which cause a rent in the endothelium. Also, the lipid-laden macrophages are enriched in tissue factor. When tissue factor is released and comes in contact with the circulating blood, it results in thrombus formation and acute coronary syndromes (unstable angina and myocardial infarction). Thus, endothelial cell dysfunction, inflammation, smooth muscle cell proliferation, and thrombus formation culminate in acute coronary syndromes.

## Inflammation and Atherosclerosis

With regard to inflammation, the prototypic marker is C-reactive protein (CRP), a member of the pentraxin family.<sup>9</sup> CRP is characterized by a cyclic pentameric structure,

displays radial symmetry, and has a molecular mass of 23,048 d.<sup>10</sup> CRP binds phosphoesters in the presence of calcium, and its synthesis in the liver is triggered by various proinflammatory cytokines derived from monocyte-macrophages or adipose tissue. The general consensus is that proinflammatory risk factors such as oxidized LDL and infectious agents such as *Chlamydia pneumoniae* trigger a proinflammatory response.<sup>11</sup> The proinflammatory response results in the increased secretion of interleukin (IL)-1 beta and tumor necrosis factor alpha (TNF-alpha), which then results in the release of the messenger cytokine IL-6. IL-6, following engagement of its receptor on the liver, results in the secretion and release of CRP and serum amyloid A.

## C-Reactive Protein and Cardiovascular Risk

Numerous studies have confirmed that high-sensitivity CRP (hsCRP) in healthy volunteers predicts cardiovascular events.<sup>12</sup> These studies are summarized in Table 2. The various studies include the Multiple Risk Factor Intervention

Trial, the Physicians Health Study, the Cardiovascular Health Study, the Women's Health Study, the Monitoring Trends and Determinants in Cardiovascular Disease study, the European Concerted Action on Thrombosis study, the Helsinki Heart Study, the Caerphilly Study, the Britain Study, and the Air Force/Texas Coronary Atherosclerosis Prevention Study (AFCAPS/TexCAPS). The consistency of these findings in these different populations is impressive. In men and women, **hsCRP** seems to be an additive risk factor for coronary artery disease to an elevated total cholesterol level (>75th percentile) and a total cholesterol/high-density lipoprotein ratio.<sup>13,14</sup> Also, in a recent report from the Women's Health Study,<sup>14</sup> the novel observation was made that despite these apparently healthy postmenopausal women having LDL cholesterol levels below 130 mg/dL (3.36 mmol/L), **hsCRP** continued to predict an approximately 3-fold increased risk for cardiovascular events in women in the fourth quartile compared with those in the first quartile. In addition, **hsCRP** has been shown to be a predictor for peripheral vascular disease.<sup>15</sup>

### C-Reactive Protein and the Metabolic Syndrome

The metabolic syndrome seems to be one of the major risk factors for cardiovascular disease, and numerous studies have confirmed that **CRP** levels are elevated in patients with the metabolic syndrome.<sup>16-19</sup> Festa et al,<sup>16</sup> in a report of the Insulin Resistance and Atherosclerosis Study, showed that **hsCRP** was positively correlated with body mass index, waist circumference, blood pressure, and levels of triglycerides, cholesterol, LDL-cholesterol, plasma glucose, and fasting insulin, and inversely correlated with the high-density lipoprotein cholesterol level and the insulin sensitivity index. This has been confirmed by numerous groups,<sup>17-19</sup> and there seems to be a clear relationship between a number of metabolic disorders (dyslipidemia, upper body adiposity, insulin resistance, hypertension) and increasing **hsCRP** levels.<sup>17,18</sup> It is believed that the proinflammatory cytokines in the metabolic syndrome derive from adipose tissue.<sup>19</sup> This area has created so much interest that Yudkin et al<sup>19</sup> have argued that IL-6 might be the major trigger culminating in the various manifestations of the metabolic syndrome, including insulin resistance, hypertension, dyslipidemia, endothelial dysfunction, and a procoagulant state and that the IL-6 levels could be driven by psychosocial stress, smoking, central obesity, and genotypic programming. Additional evidence underscoring the relationship between inflammation and the metabolic syndrome is the demonstration by Pickup et al<sup>18</sup> that both IL-6 and **hsCRP** are elevated in people with diabetes with features of

the metabolic syndrome. We confirmed this.<sup>20</sup> Furthermore, in diabetes there is clear evidence of inflammation, such as increased activity of nuclear factor- $\kappa$ B, in addition to an increased monocyte release of proinflammatory cytokines such as IL-1 beta, TNF-alpha, and IL-6.<sup>7,21</sup>

### C-Reactive Protein and Aging

There also seems to be a relationship between **hsCRP** and cardiovascular events and mortality in elderly people. In the Leiden 85 Plus Study (age, >85 years), baseline **CRP** levels were 2-fold higher in subjects who died of stroke during the first 5 years of follow-up than in control subjects.<sup>22</sup> Since levels of **hsCRP** were similar in fatal stroke vs noncardiovascular death, **hsCRP** was a strong nonspecific risk factor for mortality in this study. In the IOWA 65 Plus Rural Health Study in people older than 65 years, higher IL-6 levels and higher **hsCRP** levels were associated with a 2.6-fold increased risk for all-cause mortality.<sup>23</sup> In the Cardiovascular Health Study in people older than 65 years, in women but not men, the mean **hsCRP** was higher for case subjects with incident cardiovascular events compared with control subjects, with an odds ratio of 2.7.<sup>24</sup> In the Helsinki Aging Study of people older than 75 years, baseline **hsCRP** levels significantly predicted both total mortality and cardiovascular mortality.<sup>25</sup>

### C-Reactive Protein and Smoking

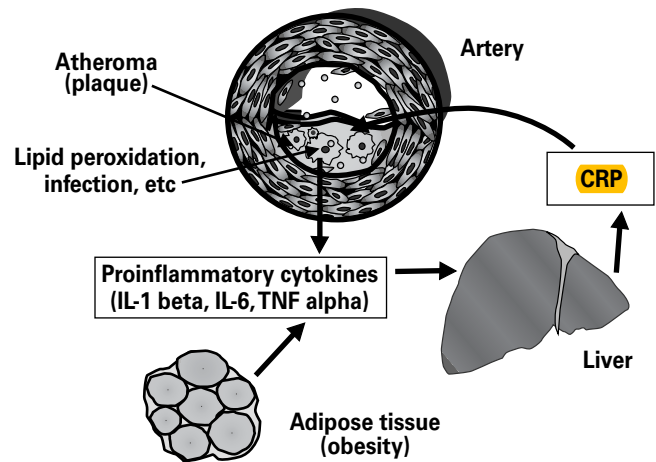
Smoking is an established risk factor for coronary artery disease. **CRP** levels also are increased in smokers, and this confers greater cardiovascular risk. This is evident from several trials such as the European Concerted Action on Thrombosis trial, the Monitoring Trends and Determinants in Cardiovascular Disease study, and the Multiple Risk Factor Intervention Trial.<sup>26-28</sup> In the Cardiovascular Health Study,<sup>29</sup> **CRP** levels strongly correlated with smoking status. In the Physicians Health Study, the increased cardiovascular risk attributable to increased **CRP** remained significant even when adjusted for smoking status.<sup>28</sup> In the Helsinki Heart Study,<sup>30</sup> smokers with an **hsCRP** level in the highest quartile had a risk of 8.6, while smokers with a low **hsCRP** level had a cardiovascular disease relative risk of 1.6. Smokers also have activated proinflammatory cytokine networks, including increased concentrations of IL-1, IL-6, and TNF.<sup>31</sup> Since it is well known that these proinflammatory cytokines stimulate **CRP** production from the liver, it is possible that this may be the mechanism to explain the increased levels of **CRP** associated with cigarette smoking.

## C-Reactive Protein and Other Evolving Risk Factors

When **hsCRP** is compared with other evolving cardiovascular risk factors such as lipoprotein(a), homocysteine, and fibrinogen, it seems to be superior.<sup>32</sup> With regard to lipoprotein(a), standardized methods to measure it are not available, and the results of prospective studies have not been consistent. Furthermore, there is no evidence to show that there is added benefit to lowering lipoprotein(a).<sup>33</sup> Assays for homocysteine are not well standardized, and the results of prospective studies in primary prevention have been equivocal; presently, no additional benefit is gained from measuring homocysteine and the lipid profile. With respect to fibrinogen, most researchers do not use the “gold standard” method of von Clauss,<sup>34</sup> and, thus, method standardization is urgently needed. Consistent prospective data are available for fibrinogen, and measurement of the fibrinogen level in addition to the lipid profile has been shown to substantially improve cardiovascular risk prediction. However, benefits of lowering the fibrinogen level are yet to be established. Of all the evolving risk factors, only **hsCRP** has an assay standardized to World Health Organization (WHO) reference material, has consistent data with regard to at least 11 prospective studies, and is additive to the lipid profile in predicting risk.

The cost-effectiveness of measuring **hsCRP** was demonstrated in a recent primary prevention study (AFCAPS/TexCAPS) with lovastatin therapy.<sup>35</sup> In this study, the number needed to treat in patients with LDL cholesterol levels more than the median level was 42 (relative risk for acute coronary events, 0.53;  $P = .001$ ), while the number needed to treat in subjects with LDL cholesterol levels less than the median of 149 mg/dL (3.85 mmol/L) and a **CRP** level more than the median of 1.6 mg/L was 48 (relative risk, 0.58;  $P = .04$ ). If the number needed to treat is used to estimate effect of therapy, measurement of **hsCRP** provides an additional method for targeting therapy, especially if lipid levels are average. Thus, for a new test to be introduced into a clinical laboratory, it needs to be shown that it provides additional information to the present repertoire of tests and also is cost-effective. The **hsCRP** assay seems to fulfill these criteria.

While at this point it is safe to state that **hsCRP** is clearly a risk marker, data are evolving to suggest that **CRP** also might be proatherogenic. To date it has been shown that **CRP** induces the production of inflammatory cytokines in monocytes, promotes tissue factor expression in monocytes, is chemotactic for monocytes, and induces shedding of cell adhesion molecules. Also, it is present in the foam cells in atherosclerotic lesions and colocalizes with activated fragments of the complement system.<sup>8,36-38</sup> Furthermore, a recent



**Figure 11** Schema depicting the role of highly sensitive C-reactive protein (**CRP**) in inflammation and atherosclerosis. IL, interleukin; TNF, tumor necrosis factor.

study demonstrated that people with high **CRP** levels had impaired endothelial vasoreactivity.<sup>39</sup> A schema depicting the factors that trigger the proinflammatory response and **CRP** is shown in **Figure 11**.

## Measurement of C-Reactive Protein

Historically, **CRP**, measured as a marker of active inflammation and infection, has a dynamic range (4-200 mg/L). During an acute inflammatory condition, **CRP** levels are increased as much as 1,000-fold.<sup>40</sup> However, the assays, usually immunoturbidimetric or immunonephelometric, do not have the appropriate sensitivity in the range required to determine cardiovascular risk. While most methods have been standardized to WHO reference material, this standard has a **CRP** concentration in the acute phase reactant range (>4 mg/L). The **hsCRP** assays use diluted WHO reference material as calibrators. At present, no secondary reference materials in the coronary artery disease risk range are available. However, the Centers for Disease Control and Prevention is in the process of developing reference material in the **hsCRP** range using an isotope dilution mass spectrometry method.

Because the **hsCRP** level of an individual patient is interpreted according to the risk profile established by prospective clinical studies, it is important that the measurement be standardized, especially since recent reports show that measurement of low **hsCRP** levels is not consistent among the various methods available.<sup>41</sup> The Dade Behring latex-enhanced method to detect **hsCRP** has been approved by the Food and Drug Administration in the risk assessment of cardiovascular disease. For most individuals, **hsCRP**

levels seem to be stable over long periods. It is important, if the **hsCRP** assay is going to be used for cardiovascular risk assessment, that one is cognizant of the fact that the test should be performed only 2 to 3 weeks after resolution of an acute inflammatory process (eg, trauma, infection), since **CRP** remains elevated for at least 14 days after an acute inflammatory condition.<sup>40</sup> To determine variability and classification accuracy, Ockene et al<sup>42</sup> examined 113 people who were scheduled to undergo 5 measurements each of **hsCRP** and total cholesterol at quarterly intervals over a 1-year period. When classified into quartiles, 63% of the first and second measurements of **hsCRP** were in agreement compared with 60% for total cholesterol measurements. Also, correct classification into the different quartiles (<0.5, 0.5-0.99, 1-1.99, and  $\geq 2$  mg/L) was obtained in 237 of the 374 pairs (64% accuracy) across the 1-year study period. Thus, in the low normal range needed for cardiovascular risk prediction, the variability and accuracy of classification of **hsCRP** is similar to that for total cholesterol. The predictive value of **hsCRP** is greatly improved if 2 measurements are made about 1 month apart and the lowest of these values is used to determine the appropriate cardiovascular risk prediction. If **hsCRP** values are more than 10 mg/L, repeated measurement is suggested to avoid misclassification owing to a clinically silent infection. It also is important to note that unlike the cytokines such as IL-6, no circadian variation seems to exist for **hsCRP**, and, thus, testing can be accomplished without regard to the time of day.

## Modulation of Inflammation

Therapies that have been shown to lower **hsCRP** include weight loss, aspirin, statin drugs, and alpha tocopherol. A recent study reported that weight loss in obese, healthy women on a very low fat diet for 12 weeks resulted in a 26% reduction in **hsCRP**.<sup>43</sup> However, **hsCRP** levels were not normalized. In the Physicians' Health Study, it was suggested that the greatest benefit with aspirin was obtained in the group that had the highest quartile of **hsCRP** compared with the lowest quartile of **hsCRP**.<sup>44</sup> This benefit could be ascribed to an antiplatelet and an anti-inflammatory effect. Results of studies that have looked at the effect of aspirin directly on **hsCRP** levels specifically have been conflicting. Ikonomidis et al,<sup>45</sup> in a study of 40 patients with angina pectoris using 300 mg/d of aspirin for 21 days, convincingly showed a reduction in **hsCRP** levels. However, Feng et al,<sup>46</sup> who used 325 mg/d or 81 mg/d in 32 healthy subjects studied for 7 days, saw no significant effect. Feldman et al<sup>47</sup> administered 81 mg of aspirin every day, 81 mg every third day, and 325 mg every third day for 31 days in an apparently normal cohort comprising 30 men and 27 women. The

groups receiving aspirin failed to show a significant reduction in **hsCRP**, while demonstrating a profound reduction in thromboxane B<sub>2</sub>. Thus, it seems that low-dose aspirin's major effect in preventing cardiovascular events is through its antiplatelet effect. Further studies are urgently needed to establish the role of higher doses of aspirin (325 mg/d) on **hsCRP** levels.

Another modality that could have an effect on **hsCRP** is the 3-hydroxy-3-methylglutaryl coenzyme A reductase inhibitor (statin) drugs. The Cholesterol and Recurrent Events study showed that the greatest benefit was achieved in the group with the highest **hsCRP** (54% reduction in cardiovascular events compared with 25% in the lowest quartile for **hsCRP**).<sup>48</sup> In this study, Ridker et al<sup>48</sup> showed a median 17% reduction in **hsCRP** levels in the group that received pravastatin (40 mg/d). Thus, it appears that pravastatin, in addition to having a beneficial effect on the lipid profile, reduces **hsCRP** in these patients and has its greatest benefit in patients with the highest **hsCRP** levels. Jialal et al<sup>49</sup> recently showed in a randomized, double-blind crossover study in patients with combined hyperlipidemia (LDL >130 mg/dL [ $>3.36$  mmol/L], triglycerides, 200-600 mg/dL [2.26-6.77 mmol/L]) that 6 weeks of therapy with simvastatin (20 mg/d), atorvastatin (10 mg/d), or pravastatin (40 mg/d) resulted in a significant reduction in **hsCRP** levels. In that study, Jialal et al<sup>49</sup> failed to show a significant correlation with regard to reduction of the LDL cholesterol level and **hsCRP** reduction, in agreement with the Cholesterol and Recurrent Events study, suggesting that the effects of statins might be pleiotropic. Recently, Horne et al<sup>50</sup> followed up 985 patients with severe coronary artery disease (>70% stenosis). The patients were followed up for 3 years, and mortality was documented in 11% of the cohort. While in this study lipids did not predict survival, subjects receiving statin therapy, simvastatin, atorvastatin, pravastatin, lovastatin, or fluvastatin, had a decreased hazards ratio of 0.049 ( $P < .05$ ). This benefit could be attributed to an elimination of increased mortality across increasing **hsCRP** tertiles in this study.<sup>50</sup>

There also is evidence to show that high-dose alpha tocopherol therapy is anti-inflammatory.<sup>51,52</sup> At least 2 studies have shown that supplementation with high-dose vitamin E (alpha tocopherol), 800 IU/d or more, is beneficial in lowering **hsCRP** in subjects with type 2 diabetes and in healthy control subjects.<sup>20,53</sup>

Other patients in whom it is of considerable interest to measure **hsCRP** are those with acute coronary syndromes.<sup>54-57</sup> It seems that elevated levels of **hsCRP** in the highest quartile seem to predict greater mortality and poor prognosis in patients with unstable angina and myocardial infarction.<sup>54</sup>

The high sensitivity **CRP** assay that is approved by the Food and Drug Administration is a double monoclonal

**Table 3**  
**High-Sensitivity C-Reactive Protein (hsCRP) and Cardiovascular Risk**

hsCRP (mg/L)	Cardiovascular Risk
<1.1	Low or mild
1.2-1.9	Moderate
>2.0	High

sandwich microparticle enzyme immunoassay referenced to the WHO standard that has a sensitivity of 0.2 mg/L. A simpler way to assess cardiovascular risk based on the data of Rifai and Ridker<sup>12</sup> for at least 5,000 individuals without clinical atherosclerosis is shown in **Table 3**. However, the levels conferring risk for women and the elderly might have to be modified as more data emerge. A value of more than 10 mg/L suggests an acute inflammatory process, “macroinflammation,” and should suggest that sampling be deferred for at least 2 weeks.

## Conclusion

Thus, **hsCRP** is a strong independent predictor of risk of future myocardial infarction, stroke, peripheral arterial disease, and vascular death among people without known cardiovascular disease. In addition, among patients with acute coronary ischemia, stable angina, and myocardial infarction, levels of **hsCRP** have been associated with increased vascular event rates. In conclusion, **hsCRP** seems to be an adjunct to lipid screening in the detection of people at high risk for coronary artery disease, especially in primary prevention. It seems to have a clear role in stratifying people into risk groups. Also, measurement of **hsCRP** would prove to be a better target for statin, aspirin, and alpha tocopherol therapy compared with the lipid profile alone, especially in smokers, the elderly, and people with the metabolic syndrome. The potential prognostic value in acute coronary syndromes requires further study. Inflammation clearly represents a new target for both treatment and prevention of acute myocardial infarction. Finally, studies need to be undertaken in minority populations to establish the validity of **hsCRP** as a risk marker in all populations.

*From the Division of Clinical Biochemistry and Human Metabolism, Department of Pathology, UT Southwestern Medical Center at Dallas.*

*Supported by grants K24 AT00596 and RO1 AT00005 from the [National Institutes of Health, Bethesda, MD.](#)*

*Address reprint requests to Dr Jialal: UT Southwestern Medical Center, 5323 Harry Hines Blvd, CS3.114, Dallas, TX 75390-9073.*

## References

- Ross R. Mechanisms of disease: atherosclerosis: an inflammatory disease. *N Engl J Med.* 1999;340:115-126.
- Cybulsky MI, Lichtman AH, Hajra L, et al. Leukocyte adhesion molecules in atherogenesis. *Clin Chim Acta.* 1999;286:207-218.
- Hwang S, Ballantyne CM, Sharrett R, et al. Circulating adhesion molecules VCAM-1, ICAM-1, and E-selectin in carotid atherosclerosis and incident coronary heart disease cases: the Atherosclerosis Risk in Communities (ARIC) study. *Circulation.* 1997;96:4219-4225.
- Caterina R, Basta G, Lazzarini G, et al. Soluble vascular cell adhesion molecule-1 as a biohumoral correlate of atherosclerosis. *Arterioscler Thromb Vasc Biol.* 1997;17:2646-2654.
- Rohde LE, Lee RT, Jamocochian M, et al. Cross-sectional study of soluble intercellular adhesion molecule-1 and cardiovascular risk factors in apparently healthy men. *Arterioscler Thromb Vasc Biol.* 1998;18:1765-1770.
- O'Byrne D, Devaraj S, Islam KN, et al. Low-density lipoprotein (LDL)-induced monocyte-endothelial cell adhesion, soluble cell adhesion molecules, and autoantibodies to oxidized-LDL in chronic renal failure patients on dialysis therapy. *Metabolism.* 2001;50:207-215.
- Devaraj S, Jialal I. Low-density lipoprotein post-secretory modification, monocyte function, and circulating adhesion molecules in type 2 diabetic patients with and without macrovascular complications: the effect of alpha-tocopherol supplementation. *Circulation.* 2000;102:191-196.
- Ridker PM, Hennekens CH, Roitman-Johnson B, et al. Plasma concentration of soluble intercellular adhesion molecule 1 and risks of future myocardial infarction in apparently healthy men. *Lancet.* 1998;351:88-92.
- Westhuyzen J, Healy H. Review: biology and relevance of C-reactive protein in cardiovascular and renal disease. *Ann Clin Lab Sci.* 2000;30:133-143.
- Thompson D, Pepys MB, Wood SP. The physiological structure of human C-reactive protein and its complex with phospholipids. *Structure.* 1999;7:169-177.
- Tracy RP. Inflammation markers and coronary heart disease. *Curr Opin Lipidol.* 1999;10:435-441.
- Rifai N, Ridker PM. High-sensitivity C-reactive protein: a novel and promising marker of coronary heart disease. *Clin Chem.* 2001;47:403-411.
- Ridker PM, Glynn RJ, Hennekens CH. C-reactive protein adds to the predictive value of total and HDL cholesterol in determining risk of first myocardial infarction. *Circulation.* 1998;97:2007-2011.
- Ridker PM, Hennekens CH, Buring JE, et al. C-reactive protein and other markers of inflammation in the prediction of cardiovascular disease in women. *N Engl J Med.* 2000;342:836-843.
- Ridker PM, Cushman M, Stampfer MJ, et al. Plasma concentration of C-reactive protein and risk of developing peripheral vascular disease. *Circulation.* 1998;97:425-428.
- Festa A, D'Agostino R, Howard G, et al. Chronic subclinical inflammation as part of the insulin resistance syndrome: the Insulin Resistance Atherosclerosis Study (IRAS). *Circulation.* 2000;102:42-47.
- Frohlich M, Imhof A, Berg G, et al. Association between C-reactive protein and features of the metabolic syndrome: a population-based study. *Diabetes Care.* 2000;23:1835-1839.

18. Pickup JC, Mattock MB, Chusney GD, et al. NIDDM as a disease of the innate immune system: association of acute-phase reactants and interleukin-6 with metabolic syndrome X. *Diabetologia*. 1997;40:1286-1292.
19. Yudkin JS, Kumari M, Humphries SE, et al. Inflammation, obesity, stress and coronary heart disease: is interleukin-6 the link? *Atherosclerosis*. 2000;148:209-214.
20. Devaraj S, Jialal I. Alpha tocopherol supplementation decreases C-reactive protein and monocyte interleukin-6 levels in type 2 diabetic patients. *Free Radic Biol Med*. 2000;29:790-792.
21. Hofmann MA, Schiekofer S, Kanitz M, et al. Insufficient glycemic control increases nuclear factor-kappa-b binding activity in peripheral blood mononuclear cells isolated from patients with type I diabetes. *Diabetes Care*. 1998;21:1310-1316.
22. Gussekloo J, Schaap MCL, Frolich M, et al. C-reactive protein is a strong but nonspecific risk factor of fatal stroke in elderly persons. *Arterioscler Thromb Vasc Biol*. 2000;20:1047-1051.
23. Harris TB, Ferrucci L, Tracy RP, et al. Associations of elevated interleukin-6 and C-reactive protein levels with mortality in the elderly. *Am J Med*. 1999;106:506-512.
24. Tracy RP, Lemaitre RN, Psaty BM, et al. Relationship of C-reactive protein to risk of cardiovascular disease in the elderly: results from the cardiovascular health study and the rural health promotion project. *Arterioscler Thromb Vasc Biol*. 1997;17:1121-1127.
25. Strandberg TE, Tilvis RS. C-reactive protein, cardiovascular risk factors, and mortality in a prospective study in the elderly. *Arterioscler Thromb Vasc Biol*. 2000;20:1057-1060.
26. Haverkate F, Thompson SG, Pyke SD, et al, for the European Concerted Action on Thrombosis and Disabilities Angina Pectoris Study Group. Production of C-reactive protein and risk of coronary events in stable and unstable angina. *Lancet*. 1997;349:462-466.
27. Koenig W, Sund M, Frohlich M, et al. C-reactive protein, a sensitive marker of inflammation, predicts future risk of coronary heart disease in initially healthy middle-aged men: results from the MONICA (Monitoring Trends and Determinants in Cardiovascular Disease) Augsburg Cohort Study, 1984 to 1992. *Circulation*. 1999;99:237-242.
28. Kuller LH, Tracy RP, Shaten J, et al. Relation of C-reactive protein and coronary heart disease in the MRFIT nested case-control study. Multiple Risk Factor Intervention Trial. *Am J Epidemiol*. 1996;144:537-547.
29. Tracy RP, Psaty BM, Macy E, et al. Lifetime smoking exposure affects the association of C-reactive protein with cardiovascular disease risk factors and subclinical disease in healthy elderly subjects. *Arterioscler Thromb Vasc Biol*. 1997;17:2167-2176.
30. Roivainen M, Viik-Kajander M, Palosuo T, et al. Infections, inflammation, and the risk of coronary heart disease. *Circulation*. 2000;101:252-257.
31. Mio T, Romberger DJ, Thompson AB, et al. Cigarette smoke induces interleukin-8 release from human bronchial epithelial cells. *Am J Respir Crit Care Med*. 1997;155:1770-1776.
32. Ridker PM. Evaluating novel cardiovascular risk factors: can we better predict heart attacks? *Ann Intern Med*. 1999;130:933-937.
33. Jialal I. Evolving lipoprotein risk factors: lipoprotein(a) and oxidized low-density lipoprotein. *Clin Chem*. 1998;44:1827-1832.
34. von Clauss A. Gerinnungsphysiologische, Schnell-methode zur Bestimmung des Fibrinogens. *Acta Haematol*. 1957;17:237-246.
35. Ridker PM, Rifai N, Clearfield M, et al. Measurement of C-reactive protein for the targeting of statin therapy in the primary prevention of acute coronary events. *N Engl J Med*. 2001;344:1959-1965.
36. Koenig W. C-reactive protein and cardiovascular risk: has the time come for screening in the general population [editorial]? *Clin Chem*. 2001;47:9-11.
37. Pasceri V, Willerson JT, Yeh ETH. Direct pro-inflammatory effect of C-reactive protein on human endothelial cells. *Circulation*. 2000;102:2165-2168.
38. Torzewski M, Rist C, Mortensen RF, et al. C-reactive protein in the arterial intima: role of C-reactive protein receptor-dependent monocyte recruitment in atherogenesis. *Arterioscler Thromb Vasc Biol*. 2000;20:2094-2099.
39. Fichtlscherer S, Rosenberger G, Walter DH, et al. Elevated C-reactive protein levels and impaired endothelial vasoreactivity in patients with coronary artery disease. *Circulation*. 2000;102:1000-1006.
40. Gabay C, Kushner I. Acute-phase proteins and other systemic responses to inflammation. *N Engl J Med*. 1999;340:348-351.
41. Roberts WL, Moulton L, Law TC, et al. Evaluation of nine automated high-sensitivity C-reactive protein methods: implications for clinical and epidemiological applications, part 2. *Clin Chem*. 2001;47:418-425.
42. Ockene IS, Matthews CE, Rifai N, et al. Variability and classification accuracy of serial high-sensitivity C-reactive protein measurements in healthy adults. *Clin Chem*. 2001;47:444-450.
43. Heilbronn LK, Noakes M, Clifton PM. Energy restriction and weight loss on very-low-fat diets reduce C-reactive protein concentrations in obese, healthy women. *Arterioscler Thromb Vasc Biol*. 2001;21:968-970.
44. Ridker PM, Cushman M, Stampfer MJ, et al. Inflammation, aspirin, and the risk of cardiovascular disease in apparently healthy men. *N Engl J Med*. 1997;336:973-979.
45. Ikonomidis I, Andreotti F, Economou E, et al. Increased proinflammatory cytokines in patients with chronic stable angina and their reduction by aspirin. *Circulation*. 1999;100:793-798.
46. Feng DL, Tracy RP, Lipinska I, et al. Effect of short-term use on C-reactive protein. *J Thromb Thrombolysis*. 2000;9:37-41.
47. Feldman M, Jialal I, Devaraj S, et al. Effects of low-dose aspirin on serum C-reactive protein and thromboxane B<sub>2</sub> concentrations: a placebo-controlled study using a highly sensitive C-reactive protein assay. *J Am Coll Cardiol*. 2001;37:2036-2041.
48. Ridker PM, Rifai N, Pfeffer MA, et al. Long-term effects of pravastatin on plasma concentration of C-reactive protein. *Circulation*. 1999;100:230-235.
49. Jialal I, Stein D, Balis D, et al. Effect of hydroxymethyl glutaryl coenzyme A reductase inhibitor therapy on high sensitive C-reactive protein levels. *Circulation*. 2001;103:1933-1935.
50. Home BD, Muhlestein JB, Carlquist JF, et al. Statin therapy, lipid levels, C-reactive protein and the survival of patients with angiographically severe coronary artery disease. *J Am Coll Cardiol*. 2000;36:1774-1780.
51. Devaraj S, Jialal I. The effects of alpha-tocopherol on critical cells in atherogenesis. *Curr Opin Lipidol*. 1998;9:11-15.

52. Devaraj S, Li D, Jialal I. The effects of alpha tocopherol supplementation on monocyte function: decreased lipid oxidation, interleukin 1 beta secretion, and monocyte adhesion to endothelium. *J Clin Invest*. 1996;98:756-763.
53. Upritchard JE, Sutherland WH, Mann JI. Effect of supplementation with tomato juice, vitamin E, and vitamin C on LDL oxidation and products of inflammatory activity in type 2 diabetes. *Diabetes Care*. 2000;23:733-738.
54. Mach F, Lovis C, Gaspoz JM, et al. C-reactive protein as a marker for acute coronary syndromes. *Eur Heart J*. 1997;12:1897-1902.
55. Kushner I, Broder ML, Karp D. Control of the acute phase response: serum C-reactive protein kinetics after acute myocardial infarction. *J Clin Invest*. 1978;61:235-242.
56. Pietila K, Harmoinen A, Poyhonen L, et al. Intravenous streptokinase treatment and serum C-reactive protein in patients with acute myocardial infarction. *Br Heart J*. 1987;58:225-229.
57. Gheno G, Libardoni M, Zeppellini R, et al. C-reactive protein on admission as a predictor of in-hospital death in the elderly with acute myocardial infarction. *Cardiologia*. 1999;44:1023-1028.
58. Mendall MA, Patel P, Ballam L, et al. C Reactive protein and its relation to cardiovascular risk factors: a population based cross sectional study. *Br Med J*. 1996;312:1061-1065.
59. Danesh J, Whincup D, Walker M, et al. Low grade inflammation and coronary heart disease: prospective study and updated meta-analysis. *Br Med J*. 2000;321:199-204.